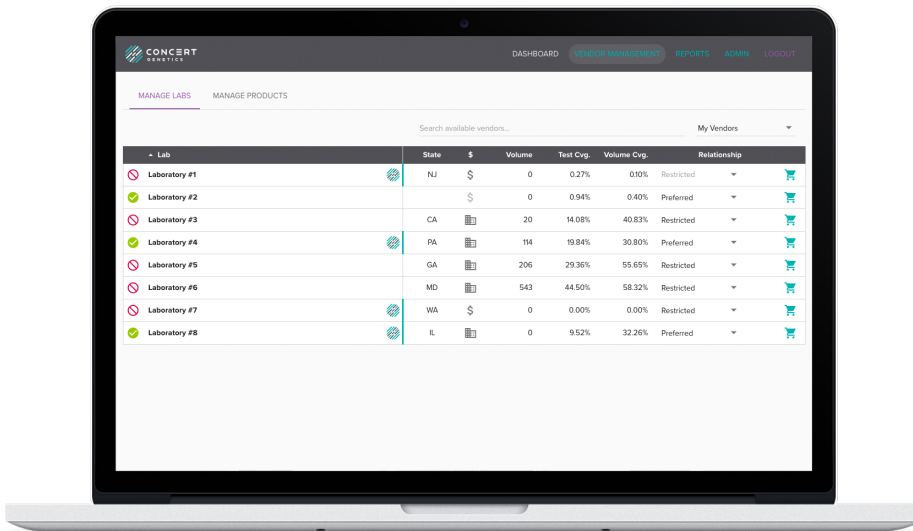


GeneConnect is a utilization management solution that provides hospitals with administrative tools to lower costs and streamline institutional genetic test ordering.

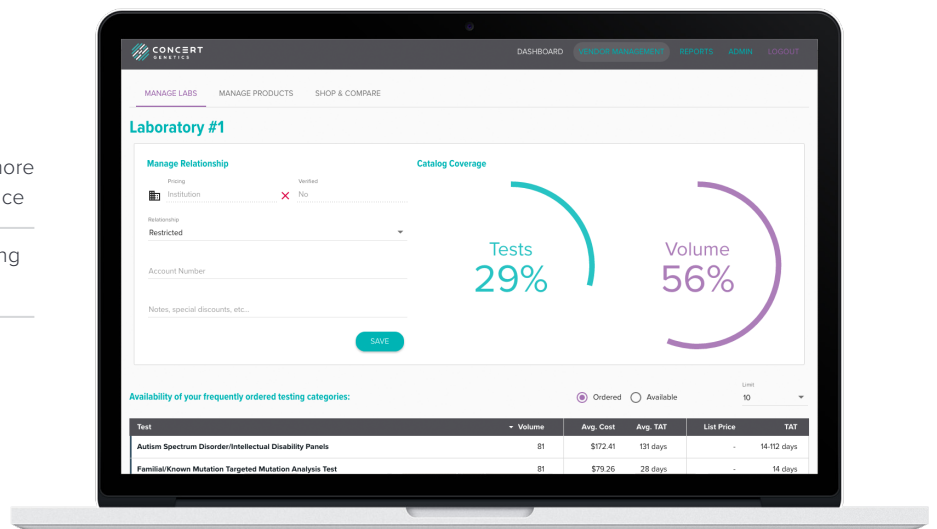


Lower Genetic Send-Out Costs

- Utilize a specialized genetic testing formulary to maintain high physician value while identifying lower-cost lab and test options
- Benchmark current pricing against other CLIA-certified laboratories
- Identify incorrect or inaccurate test ordering behavior through customized utilization reports

Improve Ordering Workflow

- Search, compare and order genetic tests from more than 300 labs using a single user-friendly interface
- Simplify your EMR data entry process by receiving digital results for all processed orders
- Shop and compare CLIA-certified laboratories on key metrics such as discount availability, TAT accuracy and customer service.



As a GeneConnect partner, take control of your hospital's genetic test ordering with these valuable support services:

Marketplace Support

- ✓ New test notification keeps your institution up-to-date and aware of the newest available testing options
- ✓ Test price tracking identifies when your hospital has missing prices by lab or by test, improving data quality and ordering decisions

Administrative Support

- ✓ Analysis of historical and current test utilization management to identify cost-savings opportunities
- ✓ Guidance and support from NextGxDx clinical genetics experts in interpreting physician ordering behavior

Clinical Support

- ✓ Analysis of ordered NGS panels breaks down value of included genes and techniques for comparison
- ✓ Current and relevant research important to improving utilization management

Search tests, disorders... smad4

MENU INSTITUTION

ORDERS PATIENTS PENDING RESULTS PROFILE

Certified In: Lab Location:

LABORATORY		SMAD4 Sequencing Test	SMAD4 Deletion/Duplication Test
Laboratory #1 Lab Info	✓	\$690-\$1490 7-21 days	\$950 14-21 days
Laboratory #2 Lab Info		\$770 14-30 days	\$340-\$940 14-30 days
Laboratory #3 Lab Info		\$450 21-28 days	\$450-\$650 21-28 days
Laboratory #4 Lab Info	⊘	\$680 28-35 days	\$400-\$750 28-35 days
Laboratory #5 Lab Info		\$490-\$550 14-35 days	\$720 14 days
Laboratory #6 Lab Info		\$850 14-28 days	\$550-\$600 42 days
Laboratory #7 Lab Info	⊘	\$990 28 days	\$1250 28 days